

SlabHeat™

Interior Slab Heating Cable



The comfort of radiant
without the mechanical room.

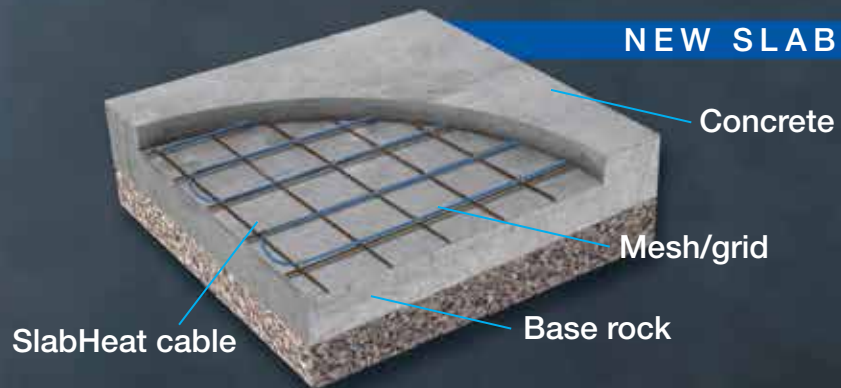
Applications

SLAB CAP



SlabHeat cable can be installed over an existing slab in a “slab cap” or in a new slab. Insulation is recommended to improve efficiency & response time.

NEW SLAB



Regardless of the size, shape, or thickness of the concrete slab, SlabHeat is a simple way to provide radiant heat to any space. SlabHeat can cover one large area or be zoned into smaller areas to control heat when and where it is needed. The concrete embedded cables are connected to controls that operate the system to provide the perfect temperature.

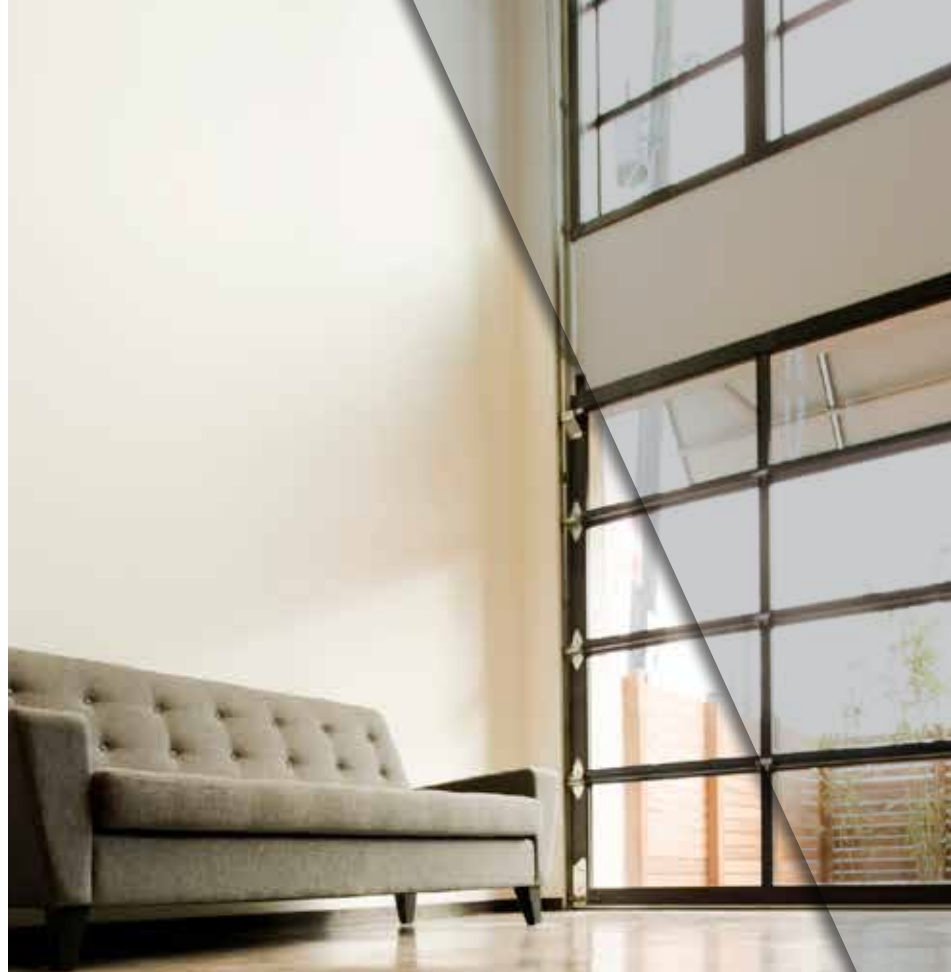
SlabHeat is engineered with the ability to produce enough BTU's to heat the slab, the space and the surface that people walk on.

Radiant Benefits:

- Comfortable, even heat without the drying effects of forced air heating
- Does not promote circulation of pathogens or allergens
- Silent heat with no vents or duct work
- Efficient and maintenance-free

SlabHeat Features:

- A reliable, durable design
- Engineered to handle the rigors of any concrete installation
- The polyurethane outer jacket offers superior flexibility, abrasion and tear resistance
- Better low temperature stability than the PVC used in other products



SlabHeat Control

The SunStat® Connect & Sunstat® Command are a perfect match for SlabHeat installations. These dual-voltage programmable controls include floor and air temperature sensing, built-in GFCI protection and energy saving 'Smart Start' technology. Up to 10 SunStat® Relays can connect to each control extending the electric heating area to 1,500 ft² for 120 V (ac) systems or 3,000 ft² for 240 V (ac).

SunStat® Connect

*Wi-Fi Programmable
Touchscreen*



'Espresso' theme display

SunStat® Command

*Programmable
Touchscreen*

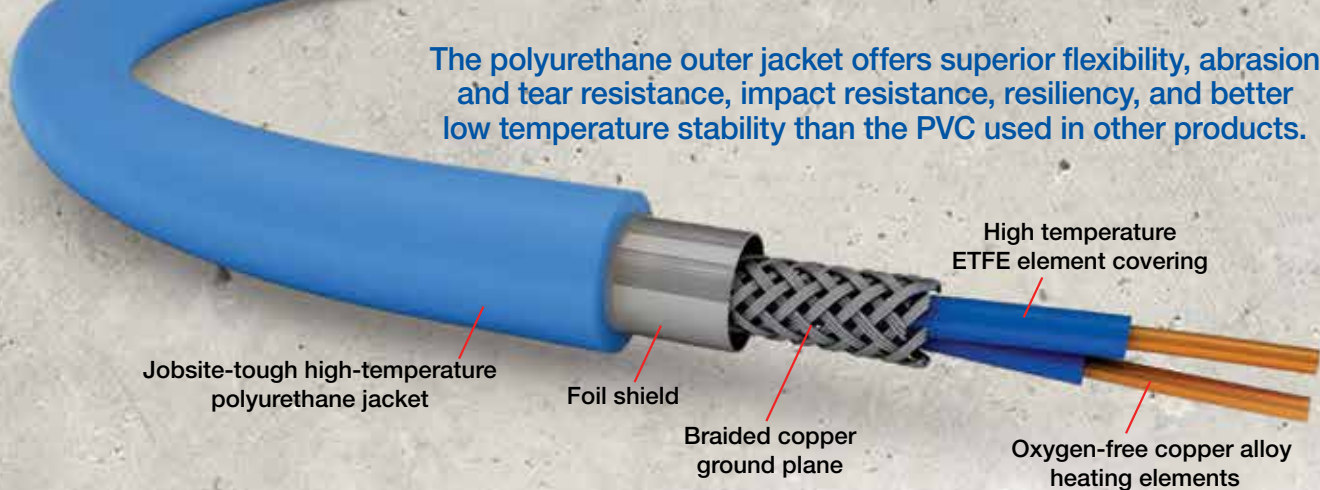


'Latte' theme display

SunStat® Relay C3



The polyurethane outer jacket offers superior flexibility, abrasion and tear resistance, impact resistance, resiliency, and better low temperature stability than the PVC used in other products.



Tough

SlabHeat™ is specifically engineered to handle a typical concrete pour. Each coil of SlabHeat cable can be installed on either 4" or 6" centers, ensuring even the most challenging spaces can be heated.

Available sizes

Model Number	Cable Length	Sq. Ft. Coverage @4" OC (15w/sq ft)	Sq. Ft. Coverage @6" OC (10w/sq ft)	Voltage	Amp Draw	Total Watts	Resistance Range (Ohms)
120 V (ac) SlabHeat Cable							
SH15120050	146	50	75	120V	6.3	750	16 - 21
SH15120066	193	66	98		8.3	990	11 - 15
SH15120082	241	82	122		10.3	1230	9 - 12
SH15120100	294	100	149		12.5	1500	7 - 10
SH15120114	336	114	170		14.3	1710	6 - 9
240 V (ac) SlabHeat Cable							
SH15240100	294	100	149	240V	6.3	1500	33 - 41
SH15240132	388	132	196		8.3	1980	23 - 30
SH15240164	483	164	243		10.3	2460	18 - 23
SH15240200	590	200	297		12.5	3000	15 - 20
SH15240228	673	228	339		14.3	3420	13 - 17

For more information about SlabHeat, contact your local SunTouch representative or visit SunTouch.com



USA: T: (888) 432-8932 • F: (417) 831-4067 • SunTouch.com
 Canada: T: (905) 332-4090 • F: (905) 332-7068
 Latin America: T: (52) 81-1001-8600 • SunTouch.com