

IntelliStation® Digital Mixing Solutions

Smart Domestic Hot Water Solutions for Commercial and Institutional Facilities



IntelliStation® Jr.

Works with the Watts® OnSite Mobile and Web App 



PowersControls.com

IntelliStation®

POWERS™
A WATTS Brand



The IntelliStation Family

IntelliStation digital mixing solutions enable the safe, efficient delivery of hot water in commercial and institutional facilities. Both products have the same functionality, but at different flow capacities. The IntelliStation, with its large-capacity valves, is designed for use in hospitals, universities, and large hotels.

IntelliStation Jr. offers the only touchscreen interface on the market with IoT capabilities through Watts OnSite mobile and web applications. This allows for ease of adjustment and commissioning with the performance and connectivity of digital mixing at a reasonable price. IntelliStation Jr. valves have a smaller flow capacity best suited for use in nursing homes, middle/high schools, and hotels.

Make the Move to Digital Mixing

It's no secret digital mixing technology enhances safety, conservation, and energy efficiency. Today, the most widely employed approach to managing hot water delivery uses thermostatic mixing technologies.

Find the right fit for your application



Mobile and web-based apps (OnSite) for enhanced domestic hot water visibility and control

	IntelliStation	IntelliStation Jr.																
Applications	Hospitals, Full/Select Service Hotels, Universities/Colleges, Prisons, Large Office, Multi-Family	Nursing Homes, Assisted Living, Ambulatory Care, Select Service/Budget Hotels, K-12 Schools, Jails, Office																
Fully Assembled w/Recirculation	Standard	Optional																
Capacity (gpm) @ 10 psid	<table border="0"> <tr> <td>3/4"</td> <td>Not Available</td> </tr> <tr> <td>1"</td> <td>Not Available</td> </tr> <tr> <td>1-1/2"</td> <td>85</td> </tr> <tr> <td>2"</td> <td>135</td> </tr> </table>	3/4"	Not Available	1"	Not Available	1-1/2"	85	2"	135	<table border="0"> <tr> <td>3/4"</td> <td>23</td> </tr> <tr> <td>1"</td> <td>55</td> </tr> <tr> <td>1-1/2"</td> <td>71</td> </tr> <tr> <td>2"</td> <td>125</td> </tr> </table>	3/4"	23	1"	55	1-1/2"	71	2"	125
3/4"	Not Available																	
1"	Not Available																	
1-1/2"	85																	
2"	135																	
3/4"	23																	
1"	55																	
1-1/2"	71																	
2"	125																	
Temperature Control	+/- 2°F to ASSE 1017	+/- 2°F to ASSE 1017																
Minimum Hot Water Supply	2°F above set point	2°F above set point																
Auto-Balancing	Standard	Standard																
Compliance	ASSE, IAPMO, cUPC, BTL, NSF, UL	ASSE, IAPMO, cUPC, BTL, NSF, UL, CE																
Native BAS	Standard, BACnet, Modbus	Standard, BACnet, Modbus																
Integrated Recirculation Pump Control	Optional	Not available																
Flow & Energy Monitoring	Optional	Not available																
Sensors:																		
Mixed Outlet Temperature	Standard	Standard																
Mixed Outlet Pressure	Standard	Not available																
Inlet Temperatures	Standard	Not available																
Inlet Pressures	Standard	Not available																
Return Temperature	Standard	Not available																
Return Pressure	Standard	Not available																
Temperature Limits/Alerts	Standard	Standard																
Sanitization Mode	Standard	Standard																
Controller																		
Passcode Protected	Standard	Standard																
Touch Screen Interface	Standard, 4-Color	Standard, 4-Color																

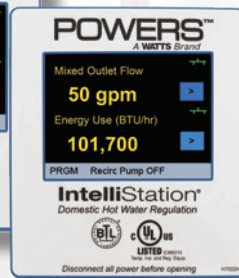
IntelliStation®

Key Capabilities

- Digital temperature regulation within +/-2°F to ASSE 1017, even during low and zero demand periods
- Field configurable without the need for a laptop or special software

By intelligently controlling and monitoring the water recirculation loop, the IntelliStation:

- Supports energy conservation through more efficient water temperature management—and in turn reduces energy costs
- Compatible with building automation systems to support integrated building management



Smart Controller

The control ships with a 3.5-inch full-color LED touchscreen interface.

The IntelliStation allows you to select the desired hot water temperature and control and monitor your water distribution system. For even greater control, IntelliStation should be installed as part of an ASSE-compliant water distribution system, including point-of-use mixing valves at each fixture in the plumbing system.¹

Hospitals



The Intelligent Way to Control Water Temperature

The IntelliStation is the smart way to deliver mixed water throughout a hot water recirculation loop. The digital water mixing and recirculation solution can be integrated in a building automation system (BAS) to allow facilities managers to remotely monitor and control water temperatures.

Factory assembled and tested as complete system

Actuator is located outside of mixing valve where it is not affected by potential water leakage from valve.

Internal capacitor initiates valve position to full cold upon power and is not reliant on batteries. Closes hot water in the event of power failure or cold water failure.

Mixed Water Outlet

Return

Smart controller with 3.5" full-color touchscreen interface for ease of use and clarity of critical data.

Temperature and pressure sensors on hot/cold water inlet supplies, mixed water outlet, and tempered water return.

Integrated recirculation pump (engineer specified)

Integrated check valves prevent cross flow

Hot Water Inlet

Cold Water Inlet

To Boiler

OTHER FEATURES

- Lead Free* approved to NSF 372
- Optional energy efficiency package monitors GPM and BTUs
- ASSE 1017 listed, cUPC listed, UL listed, BACnet Testing Laboratory (BTL) listed

**The wetted surface of this product contacted by consumable water contains less than 0.25% of lead by weight.*

Typical Applications

Universities



Hotels



Tempered Water Delivery Redefined

Domestic Hot Water

1. PVI® Conquest® water heater
2. Powers™ IntelliStation® digital mixing system

Watts Water Management

3. SmartStream® UV disinfection
4. Big Bubba® water filtration
5. OneFlow® anti-scale
6. Watts Backflow Preventer



SELEXIT™

SIZE. SELECT. CONFIGURE.

Use the Watts Selexit™ sizing and configuration platform to easily determine which IntelliStation best suits your facility.

Point-of-use applications

Combine the IntelliStation with these other quality mixing products from Powers to ensure fixture temperatures are comfortable and safe.



Individual Bath/Whirlpool (ASSE 1070)



LFLM495



Individual Showers (ASSE 1016)



E420 • E700

Watts Brands Combine for a Multi-barrier Approach to Legionella

Watts provides the right mix of expertise, experience, and solutions to help diminish the threat of Legionella, as well as other pathogens in premise plumbing. These water quality and heating solutions complement the IntelliStation to provide options for creating and maintaining a water management plan.

SmartStream® UV Ultraviolet Disinfection System

- Limits Legionella reproduction in an easy to maintain and energy efficient process
- Provides affordable way to protect against bacteria Legionella and other waterborne bacteria and pathogens
- Removes dissolved substances such as hardness minerals, iron, manganese, and tannin
- Protects plumbing system equipment while ensuring production of safe, high quality water

OneFlow® Anti-scale System

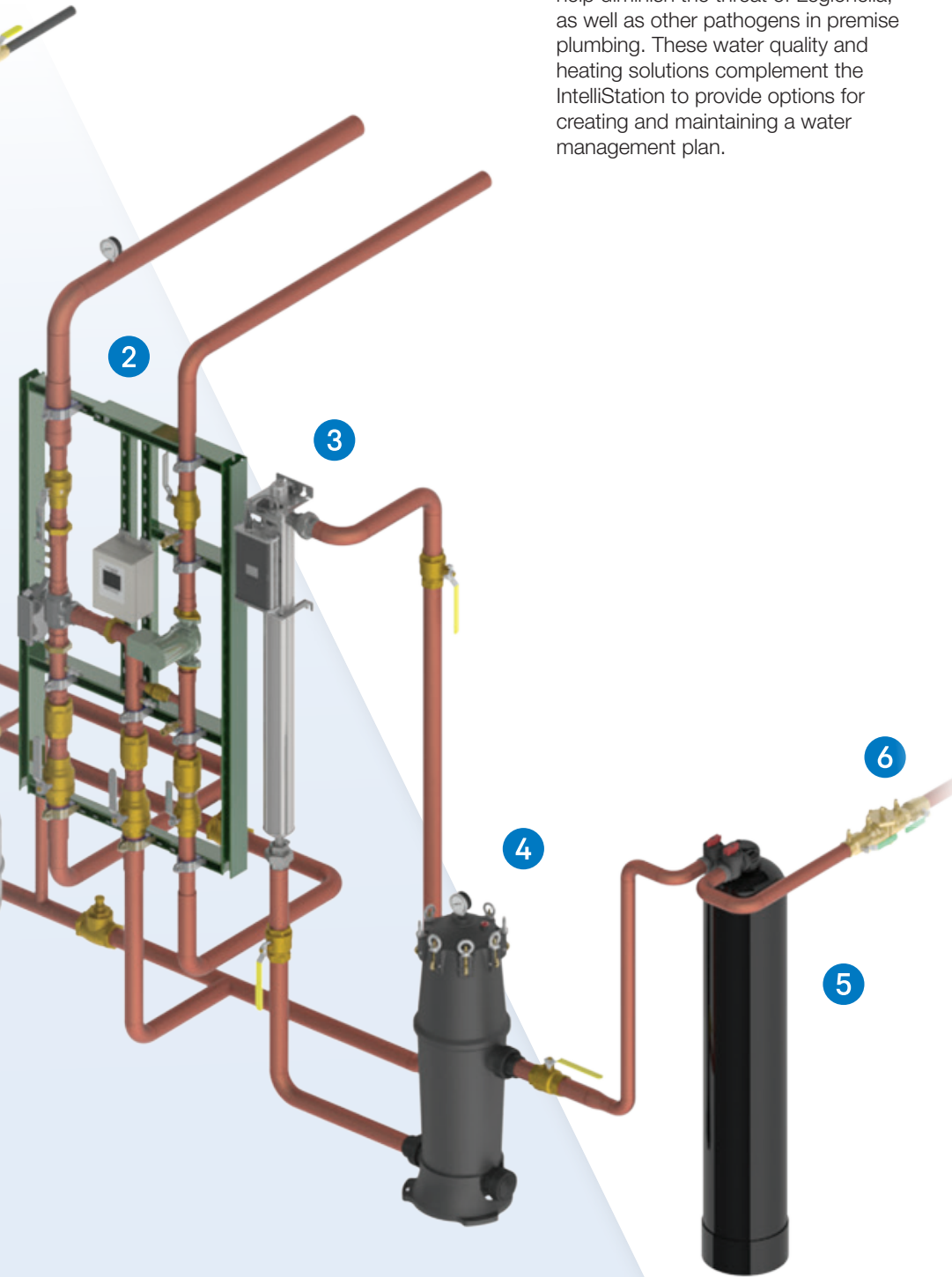
- Limits the buildup of scale in pipes and valves, reducing nourishment to Legionella and possibly helping other Legionella risk mitigation solutions work more efficiently and effectively
- Prevents mineral build-up inside pipes, fixtures and appliances
- Does not require salt, chemicals or electricity
- Has no regeneration cycle to flush water down the drain

Big Bubba® Non-metallic Filter Housings

- Effectively remove sediment, assisting other equipment to function properly.
- Reduce sediment and sediment shadows, which increases effectiveness of UV
- Commercial filtration with optional activated carbon cartridge removes chlorine bad tastes, foul odors and sediment
- Pre-filtration for reverse osmosis equipment
- 100% efficient because no backwashing is required

PVI Conquest® Water Heaters

- Provide up to 97% thermal efficiency operating up to 140°F, the storage temperature recommended by ASHRAE, OSHA and the CDC to control Legionella.



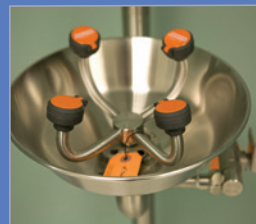
Lavatory Sinks (ASSE 1070)



TempTAP™



LFe480



Safety Shower • Eye Wash (ASSE 1071)



ES/ETV Series

IntelliStation® Jr.

Watts® OnSite

IntelliStation® Jr. provides safe hot water consistently and on demand for smaller applications than the IntelliStation. Register your Jr. in the Watts OnSite mobile or web app for remote temperature control and monitoring and visibility across locations and sublocations.



Three-way lead free ball valve

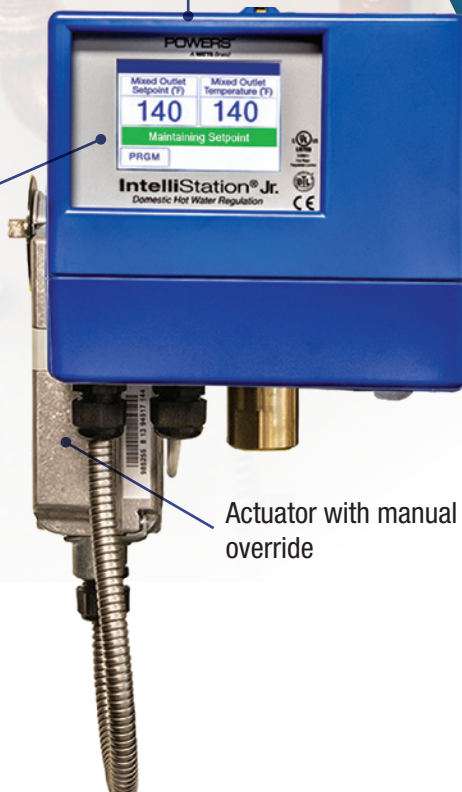
Fast acting temperature sensor (Mixed Outlet)



ASSE 1017, cUPC, CE, UL, BACnet Testing Laboratory (BTL) listed, and NSF approved

IntelliStation Jr. control module

- Mobile and web app enabled
- BAS enabled
- NVM (Non-volatile memory)
- Touchscreen interface



Actuator with manual override

Nursing Homes

Key features include:

- Water temperature control to +/-2°F in accordance with ASSE 1017
- Mobile and web-based apps for enhanced domestic hot water visibility and control.
- A programmable temperature set-back/scheduling program that lowers water temperature when the building is unoccupied
- Field configurability and simplified installation
- Sanitization mode addressing waterborne bacteria
- BAS connectivity
- Software updates via WiFi
- Now available in sizes 1.5" and 2"

Shown: factory assembled and tested as complete system, valve only units also available

Smart controller with 3.5" full-color, user-selectable touch screen display, passcode protected

High speed actuator with manual override

Integrated check valves prevent crossflow



Typical Applications

Schools



Hotels/Motels



Why Water Mixing Is Critical in Providing Safe Water

Water plays an essential role in all our lives, but unmonitored and untempered, water can pose serious risks. IntelliStation solutions provide the capability to control water temperature to mitigate the risks posed by Legionella and other waterborne pathogens and to avoid scalding and thermal shock injuries.

Legionella

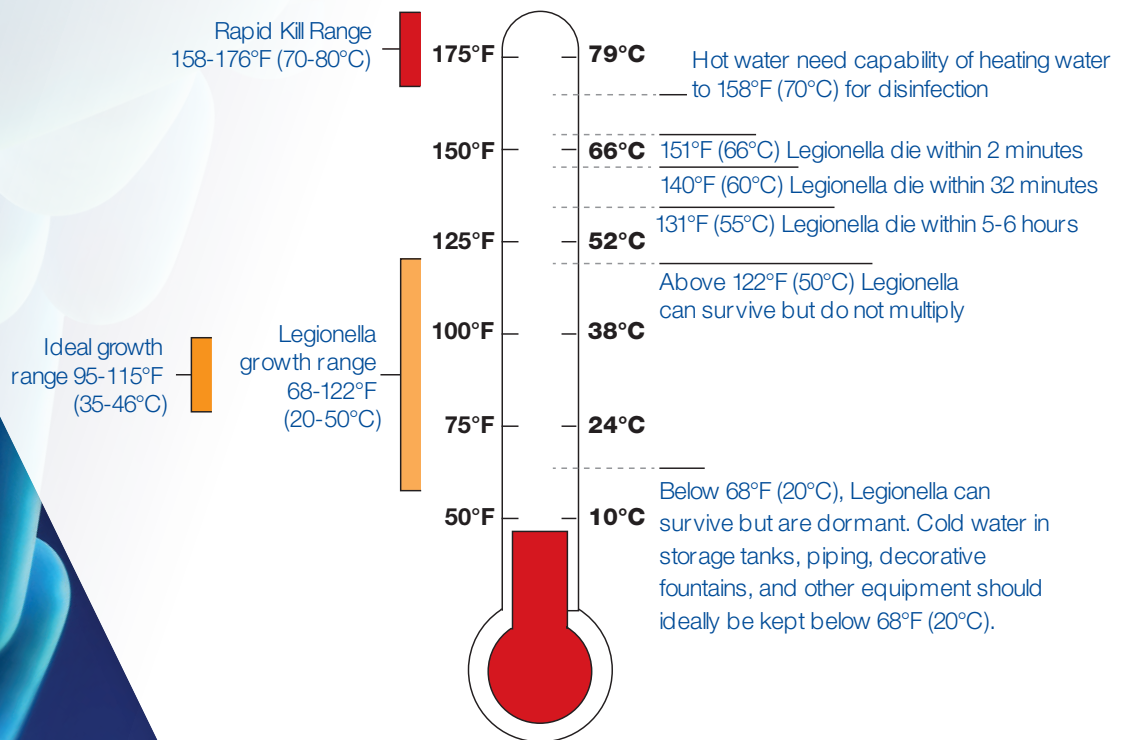
According to the Centers for Disease Control (CDC), proper maintenance of water distribution systems is key to preventing illness from waterborne bacteria such as Legionella. Managers of commercial and institutional facilities know that selecting and controlling proper water temperature in their storage and delivery systems plays an important part in any maintenance program.²

In 2017, Centers for Medicaid & Medicare (CMS) issued a mandate based on ASHRAE 188 stating that hospitals must comply or risk losing Medicaid and Medicare reimbursements.

ASHRAE 188 is a standard that provides minimum requirements for limiting Legionella in building water systems.

According to Dr. Janet E. Stout, president and director of Special Pathogens Laboratory and research associate professor at the University of Pittsburgh Swanson School of Engineering in the Department of Civil and Environmental Engineering, 56% of Legionnaires' cases come from premise plumbing systems and 22% come from cooling towers.

Legionella Growth Chart



Legionella Affects Thousands

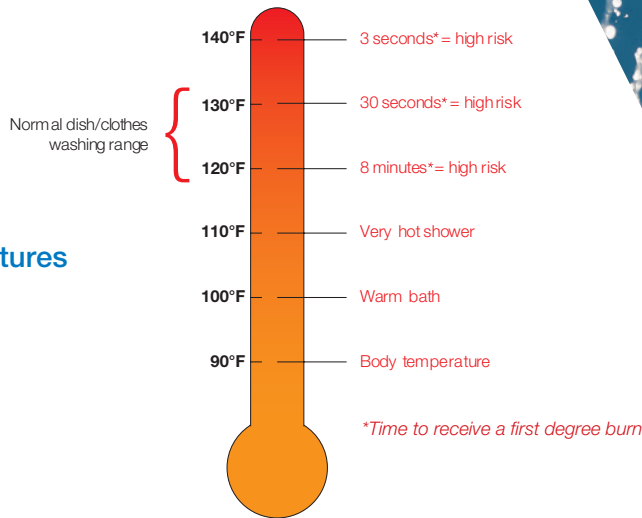
The CDC reported about 6,100 cases of Legionnaires' disease in the United States in 2016. The Institute estimates that one in ten people who get sick from Legionella will die.³

Scalding

The IntelliStation makes it easy to select and set a safe water temperature for your facility's residents and visitors to limit the risk of injuries resulting from scalding and thermal shock.⁴

Uncontrolled and unmonitored water distribution systems can create high-temperature scalding hazards in bathtubs, sinks and showers.

Scalding Risk at Various Temperatures

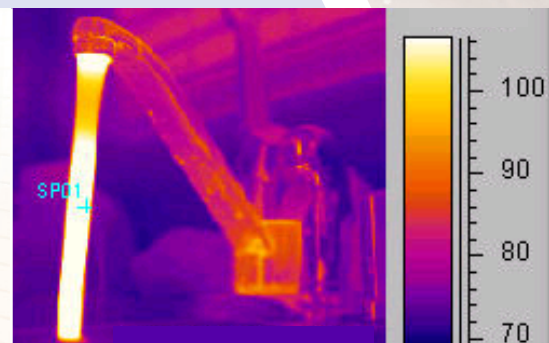


In 2003, approximately 21,000 children were treated for scald burns.

- Approximately 5,000 serious injuries from scalding tap water occur every year.
- 1,400 of those injuries result in overnight hospital stays and 34 result in deaths.
- Tap water burns account for up to 17% of all childhood burns requiring hospitalization.
- 85% of these deaths and injuries involve children under 15 and seniors over 65.⁵

Thermal Shock

The thermal shock of a rapid and uncomfortable change in shower water temperature can cause a fall or serious injury. With the IntelliStation, stable mixed water is delivered to ASSE-listed thermostatic point-of-use devices to minimize this risk.





Register your IntelliStation Jr. with Watts OnSite

Use Watts OnSite mobile and web-based apps for enhanced visibility and control.

- Provides monitoring and visibility of mixing valve assets across multiple locations and sublocations
- Remote temperature control
- Sends system alerts via text and/or email
- Prioritizes alerts based on levels of safety and potential liability
- Three user levels for security; Owner, Admin, and User

Download the Watts OnSite app to unlock these great features and more!



Scan to access the web-based apps

¹ Installation and adjustment of the IntelliStation are the responsibility of the owner and installer and must be done by qualified personnel in accordance with the manufacturer's instructions, and in compliance with all governmental requirements, building and construction codes and standards. The owner and user of the IntelliStation is responsible for selecting and installing the product in an appropriate water distribution system, proper sizing, maintaining proper water quality/condition, and deciding what temperature is safe and appropriate for the water distribution users and facility.

² The IntelliStation provides user-directed control and monitoring of water distribution systems. It is the user's responsibility to select and maintain water temperatures that are safe and appropriate for the water system users and facility. The IntelliStation's Sanitization mode is intended for use as part of a user-directed, controlled and supervised protocol that has been safely and properly designed. Always read and follow the User Guide & Instruction Manual and all product warnings and labels, and comply with all governmental and safety requirements.

³ <https://www.cdc.gov/legionella/fastfacts.html>

⁴ It is recommended to install IntelliStation as part of an ASSE 1017-compliant water distribution system, including point-of-use mixings valves that are listed to ASSE 1016, ASSE 1069, ASSE 1070 or ASSE 1071.

⁵ <https://cultureofsafety.thesilverlining.com/childcare/tap-water-burns-and-scalds/>

POWERS™

A WATTS Brand

USA: Tel: (888) 432-8932 • PowersControls.com
Canada: Tel: (888) 208-8927 • PowersControls.ca
Latin America: (52) 55-4122-0138 • PowersControls.com