

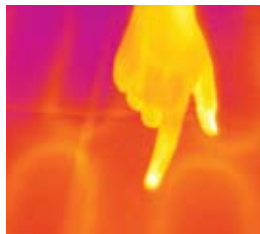


SunTouch WarmWire®



WarmWire is a simple, economical way to warm floors. Warm all kinds of floor coverings including ceramic tile, stone, wood, laminates, vinyl or carpet. WarmWire is true radiant floor heating. It warms your floor and feet much like a mug of hot coffee or cocoa warms your hands.

Infrared photography shows how a WarmWire radiant floor matches the skin temperature of the human body (80-85°F), giving occupants perfect comfort.



This FLIR infrared camera was used to capture these images of temperature signature.



Warm the floor of a powder room or large family room. There really is no limit. A single cable can heat a 240 sq.ft. area at 3" o.c. Larger rooms can be warmed with multiple cables wired together.

WarmWire may also provide all the heat necessary

for a room, as well as simply warm the floor. At 2.5" o.c. it delivers about 40 BTUH per square foot, which is quite a bit of heat. Some rooms need less than this to be heated. So, if you want WarmWire to be the sole source of heat in a room, contact the factory to find out.



WarmWire Strapping

The WarmWire is held in place by WarmWire strapping attached to the subfloor or backerboard.



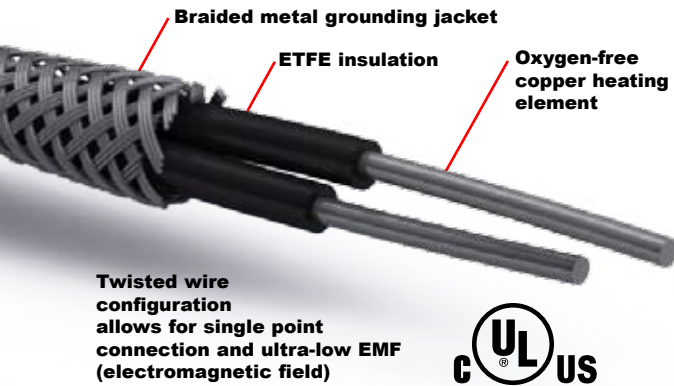
WarmWire is true radiant floor heating. It warms your floor and feet much like a mug of hot coffee or cocoa warms your hands.



4500 E. Progress Place Toll free phone: 888-432-8932
Springfield, MO 65803 Website: www.suntouch.com
©2004-2008 Watts Radiant Inc. Lit#: WWBro 06-26-08

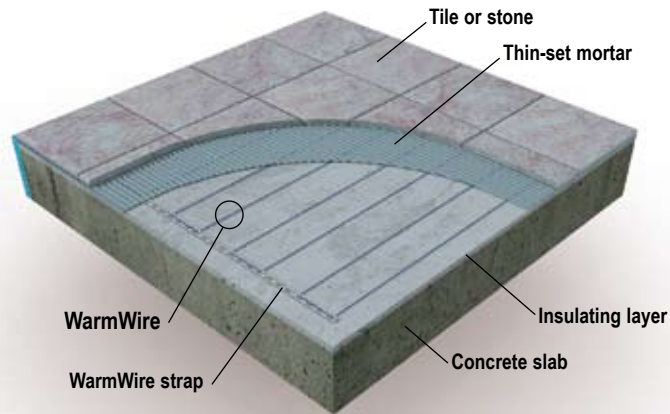
FLOOR WARMING SYSTEM

WarmWire® up close.

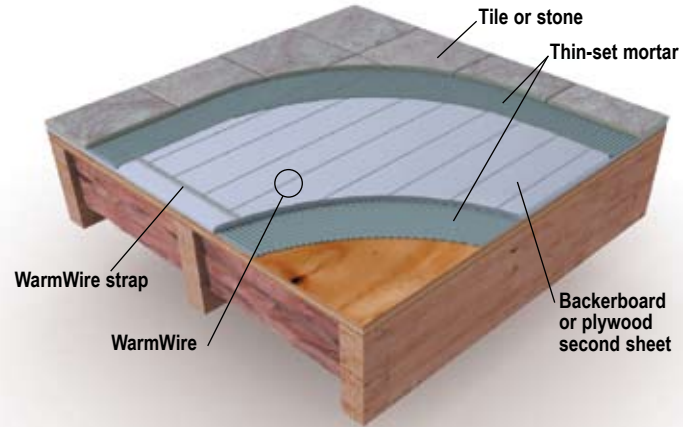


WarmWire® in slab and framed floor applications.

WarmWire in thin-set over slab.



WarmWire with tile backer board.



Easy to install.

There's a WarmWire spool sized for any project. Lay out and attach the WarmWire strap. Fasten the WarmWire to the strap as you weave it across the floor. Put down a layer of thin-set mortar for tile or stone, or use a self-leveling cement over the cables for laminates, vinyl, carpet floor coverings. Our installation manual shows all the details.

Affordable and efficient.

The materials cost for an average 30–40 sq.ft. WarmWire floor is less than \$500. WarmWire is energy-conscious, too. Ten square feet of wire uses the same energy as two 60W light bulbs. At 10¢ a kilowatt, 40 sq.ft. of heat would cost only \$3.00 a month.

Control your comfort.

The SunStat uses a floor sensor to control temperature. The programmable SunStat automatically turns the system on and off based on your personal schedule.

WarmWire® features and benefits.

- **Single point electrical connection for easier wiring and layout.**
- **Insulated with high-performance ETFE for longer life.**
- **Protected with braided metal grounding jacket for durability, longevity and safety.**
- **Available in both 120 VAC and 240 VAC to accommodate both small and large rooms.**
- **Sizes available up to 240 sq.ft.**
- **UL Listed for the USA and Canada.**
- **Grounded from one end to the other for safety.**
- **Twisted wire design with Ultra-low EMF for peace of mind.**

WarmWire® estimating and sizing.

When figuring the area to be heated, do not include the area under cabinets or appliances. Leave the wire at least 6" away from the toilet wax ring and 2"–3" away from your walls. Do install up to the toe-kick in front of kitchen or bath cabinets so your toes stay warm.

Pick a "spacing factor" (2", 2.5", or 3" on center). Below are guidelines for application and respective spacing recommendations.

- **2" o.c. delivers 15 Watts per sq.ft.** — Basement slabs, sunrooms, high heat loss areas, etc.
- **2.5" o.c. delivers 12 Watts per sq.ft.** - Bathrooms, kitchens, dining/living areas, etc.
Note: 2.5" o.c. is most commonly used spacing.
- **3" o.c. delivers 10 Watts per sq.ft.** - Hallways and other low heat loss areas, or floors in more moderate climates.

WarmWire® control options.

SunStat™ — Programmable

The Programmable control is both elegant and intelligent. This control handles both 120 VAC and 240 VAC, it has four preset program schedules and one user program schedule for customized programming. Features include a floor sensor and/or air sensor that controls floor temperature; 15-amp capacity controlling up to 150 sq. ft. of 120-VAC WarmWire at 2.5" o.c., or 300 sq. ft. of 240-VAC WarmWire at 2.5" o.c.; built-in ground fault protection with no need for a separate GFCI; large, back-lit digital display; temperature range of 40° to 99°F; temperature display in °F or °C; on/off switch; 12 or 24-hr. clock.

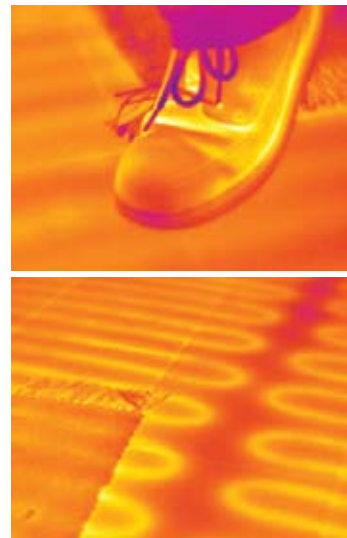
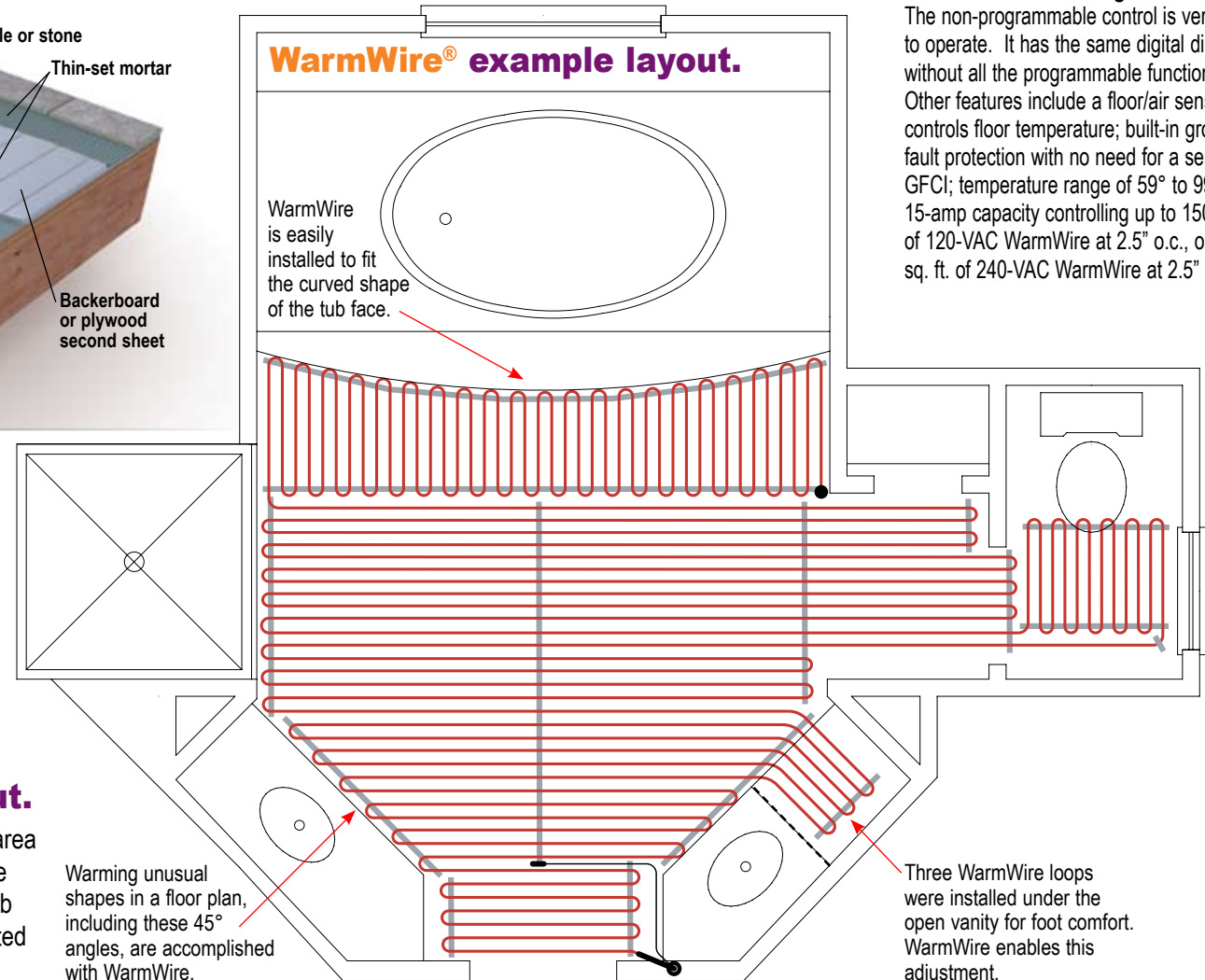


SunStat™ — Non-Programmable

The non-programmable control is very simple to operate. It has the same digital display without all the programmable functions. Other features include a floor/air sensor that controls floor temperature; built-in ground fault protection with no need for a separate GFCI; temperature range of 59° to 99°F; 15-amp capacity controlling up to 150 sq. ft. of 120-VAC WarmWire at 2.5" o.c., or 300 sq. ft. of 240-VAC WarmWire at 2.5" o.c.



WarmWire® example layout.



Nothing matches the comfort of radiant heat. Infrared photography proves it!